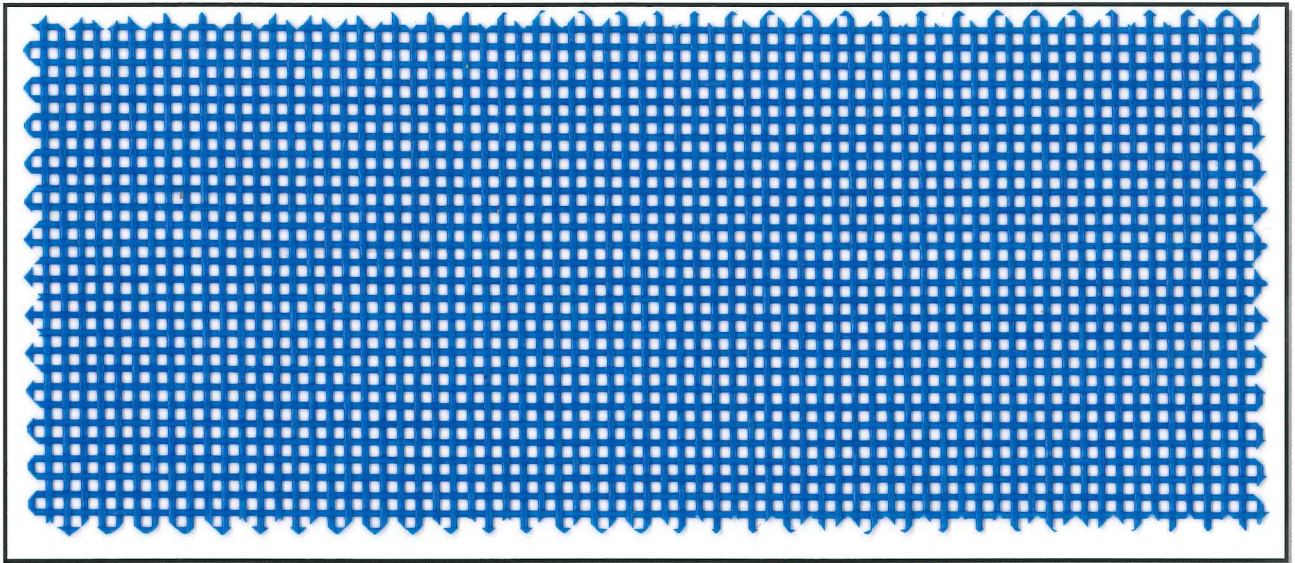
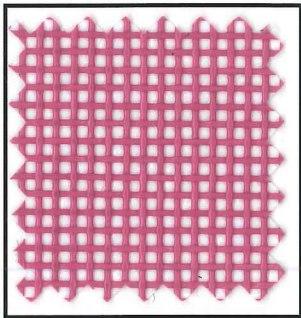


ECY™ Mesh

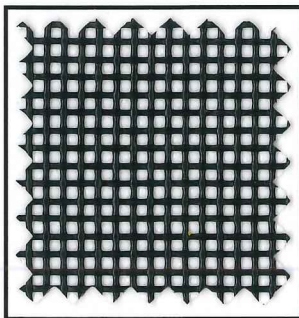
72" Extruded Coated
Yarn Mesh



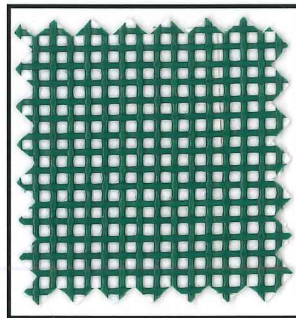
Royal Blue
Item # 787950



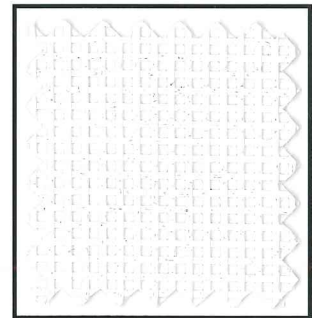
Mauve
Item # 787965



Black
Item # 787946



Forest Green
Item # 787960



White
Item # 787955



**BRUIN PLASTICS
COMPANY INC.**

PO Box 700, 61 Joslin Road, Glendale, RI 02826 USA
(401) 568-3081 • Toll-Free (800) 556-7764 • Fax (401) 568-0019
sales@bruinplastics.com • www.bruinplastics.com

ECY™ Mesh 72" Extruded Coated Yarn Mesh

Durable and breathable, ECY is ideal for indoor and outdoor high strength industrial applications including tarpaulins, sporting goods, pool fencing, screening, medical products and much more.



Product Properties	Test Method	Results
Base Fabric		11 x 11 1000 D Poly
Weight	5041	10 oz./psy
Width		72"
Put Up		50-100 yards / roll
Tensile Strength	5100 (warp x fill)	225 x 225 lbs / in.
Tear Strength	5134 (warp x fill)	75 x 75 lbs
Flame Resistance	MVSS 302	Pass
Mildew Resistance	ASTM G21-13	No growth



Above values are average values, as tested in our laboratory or outside testing facilities. All productions are subject to variations. This information is not intended to be used as strict specifications. All data obtained in our laboratory or from outside testing facilities is considered accurate, however no warranty is expressed or implied.



PO Box 700, 61 Joslin Road, Glendale, RI 02826 USA
 (401) 568-3081 • Toll-Free (800) 556-7764 • Fax (401) 568-0019
 sales@bruinplastics.com • www.bruinplastics.com